



ITE PARKING DEMAND 13,500 SF LIBRARY			
DAY	AVERAGE RATE	FITTED EQN	85TH PERCENTILE
MONDAY-FRIDAY	32	34	60
SATURDAY	23	-	-
SUNDAY	23	-	-

**BOHLER**  
 SITE CIVIL AND CONSULTING ENGINEERING  
 PROGRAM MANAGEMENT  
 LANDSCAPE ARCHITECTURE  
 SUSTAINABLE DESIGN  
 PERMITTING SERVICES  
 TRANSPORTATION SERVICES

**REVISIONS**

REV	DATE	COMMENT	DRAWN BY	CHECKED BY
1	10/30/20	CLIENT COMMENTS		
2	11/12/20	PARKING ALTERNATIVE	KMB	GPF

**811**  
 Know what's below.  
 Call before you dig.  
 ALWAYS CALL 811  
 It's fast. It's free. It's the law.

**FOR CONCEPT PURPOSES ONLY**

THIS DRAWING IS INTENDED FOR MUNICIPAL AND/OR AGENCY REVIEW AND APPROVAL. IT IS NOT INTENDED AS A CONSTRUCTION DOCUMENT UNLESS INDICATED OTHERWISE.

PROJECT No.: CT201020  
 DRAWN BY: BTJ  
 CHECKED BY: GPF  
 DATE: 07/07/2020  
 CAD ID: CT201020-CVL-B1

PROJECT:

**PROPOSED SITE PLAN DOCUMENTS**

FOR

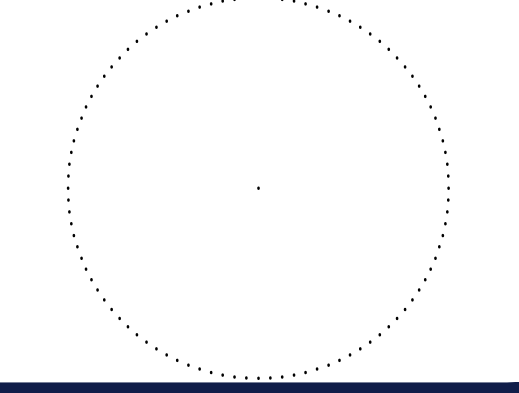
**CARLTON FIELDS**

PROPOSED DEVELOPMENT

580 EXETER ROAD  
 NEW LONDON COUNTY  
 LEBANON, CONNECTICUT  
 BLOCK & LOT: - -

**BOHLER**

65 LASALLE ROAD, SUITE 401  
 WEST HARTFORD, CT 06107  
 Phone: (860) 333-8900  
 Fax: (508) 480-9080  
[www.BohlerEngineering.com](http://www.BohlerEngineering.com)



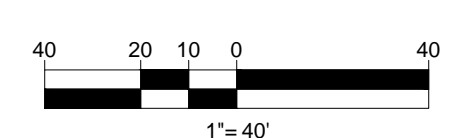
SHEET TITLE:  
**CONCEPTUAL LAYOUT PLAN**

SHEET NUMBER:  
**CA-02**

REVISION 2 - 11/12/20



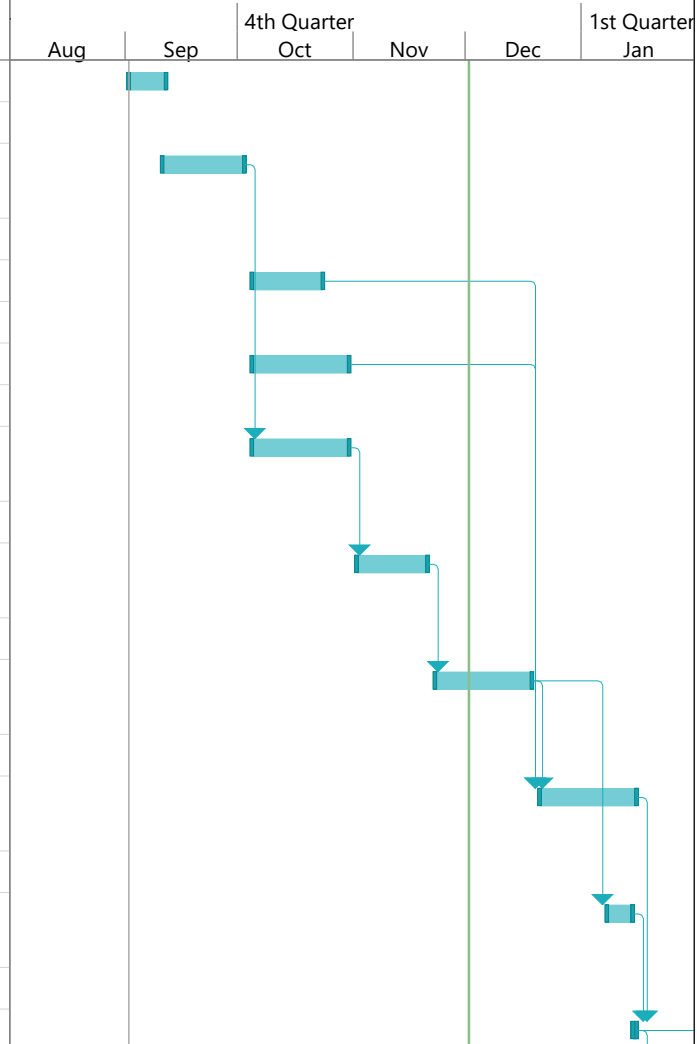
- CONCEPT LAYOUT PLAN NOTES**
- THIS PLAN HAS BEEN PREPARED BASED ON REFERENCES INCLUDING:
    - 2016 CTECO ORTHOPHOTOGRAPHY.
  - EXACT LOCATION OF PROPOSED BUILDING AND IMPROVEMENTS MUST BE CONFIRMED AND EVALUATED UPON COMPLETION OF SURVEY.
  - THIS PLAN IS INTENDED FOR CONCEPTUAL REVIEW PURPOSES ONLY. THE EXISTING CONDITIONS SHOWN HEREON IS BASED UPON INFORMATION THAT WAS SUPPLIED TO OUR OFFICE AT THE TIME OF PLAN PREPARATION AND MAY BE SUBJECT TO CHANGE AND MUST BE UPDATED UPON PERFORMANCE OF A SURVEY.



P:\20\CT201020\DRAWINGS\CONCEPT\B1\CT201020-CVL-B1.dwg - LAYOUT - CA-02-AERIAL



ID	Task Mode	Task Name	Duration	Start	Finish	Predecessors	4th Quarter					1st Quarter
							Aug	Sep	Oct	Nov	Dec	Jan
1		Contract Agreement	8 days	Wed 9/2/20	Fri 9/11/20							
2												
3		Drawings - 20% Progress Set	16 days	Fri 9/11/20	Fri 10/2/20							
4												
5		Archeological Study	15 days	Mon 10/5/20	Fri 10/23/20							
6												
7		HAZMAT Survey	20 days	Mon 10/5/20	Fri 10/30/20							
8												
9		Drawings - 50% Progress Set	20 days	Mon 10/5/20	Fri 10/30/20	3						
10												
11		Drawings - 75% Progress Set	15 days	Mon 11/2/20	Fri 11/20/20	9						
12												
13		Drawings - 90% Progress Set	20 days	Mon 11/23/20	Fri 12/18/20	11						
14												
15		Drawings - 100% Progress Set	20 days	Mon 12/21/20	Fri 1/15/21	13,5,7						
16												
17		Submission To State Library Commission	5 days	Fri 1/8/21	Thu 1/14/21	13						
18												
19		Notice to Bid	1 day	Fri 1/15/21	Fri 1/15/21	15,17						



Project: Jonthan Trumbull Libra  
Date: Wed 12/2/20

Task		Inactive Summary		External Tasks	
Split		Manual Task		External Milestone	
Milestone		Duration-only		Deadline	
Summary		Manual Summary Rollup		Progress	
Project Summary		Manual Summary		Manual Progress	
Inactive Task		Start-only			
Inactive Milestone		Finish-only			

ID	Task Mode	Task Name	Duration	Start	Finish	Predecessors	4th Quarter					1st Quarter
							Aug	Sep	Oct	Nov	Dec	Jan
20												
21		Bidding Phase	21 days	Mon 1/18/21	Mon 2/15/21	19						
22												
23		Bid Review	10 days	Tue 2/16/21	Mon 3/1/21	21						
24												
25		Library Relocation	10 days	Tue 2/16/21	Mon 3/1/21	19						
26												
27		Contract Award	1 day	Tue 3/2/21	Tue 3/2/21	23						
28												
29		General Contractor Commences	1 day	Mon 3/8/21	Mon 3/8/21	27						
30												
31		Construction Phase	261 days	Mon 3/8/21	Mon 3/7/22	29						
32												
33		Library Relocation	21 days	Wed 3/9/22	Wed 4/6/22	31						

Project: Jonthan Trumbull Libra  
Date: Wed 12/2/20

Task		Inactive Summary		External Tasks	
Split		Manual Task		External Milestone	
Milestone		Duration-only		Deadline	
Summary		Manual Summary Rollup		Progress	
Project Summary		Manual Summary		Manual Progress	
Inactive Task		Start-only			
Inactive Milestone		Finish-only			