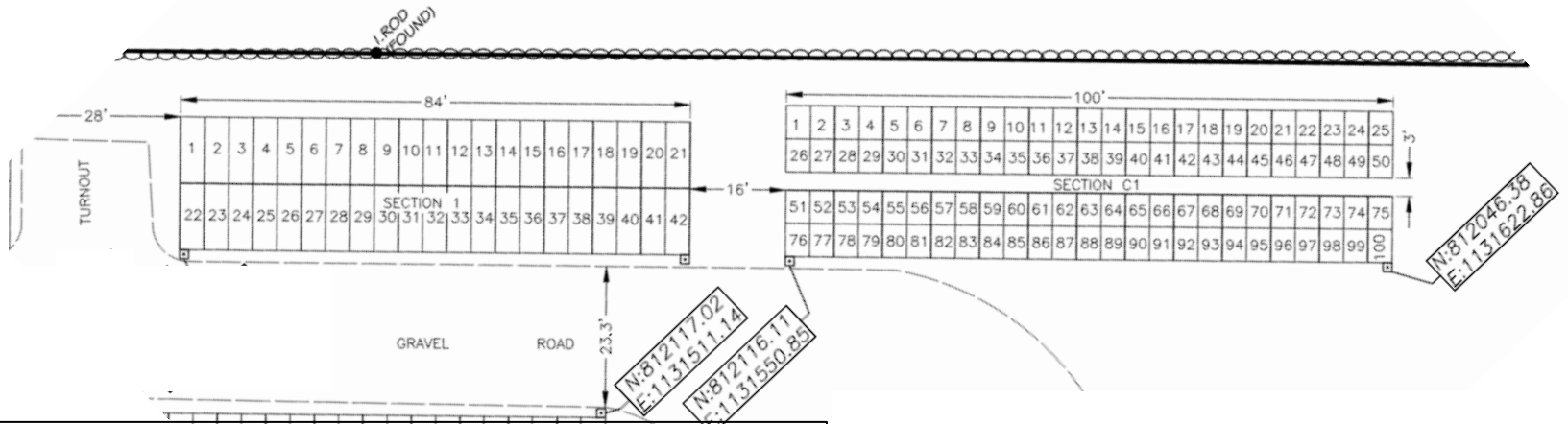


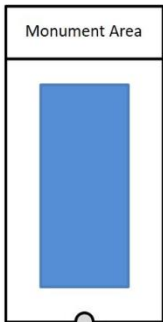
Open Sections in North Lebanon Cemetery



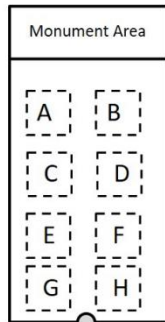
Section 1. Standard Burial Sites

Sub-site numbering scheme

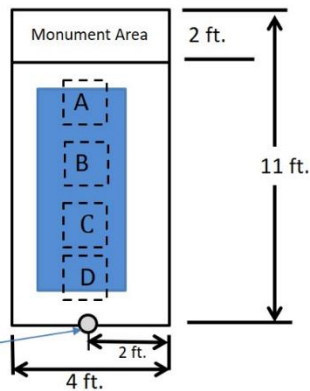
One casket



8 Cremation urns



4 cremation urns placed on top of a casket

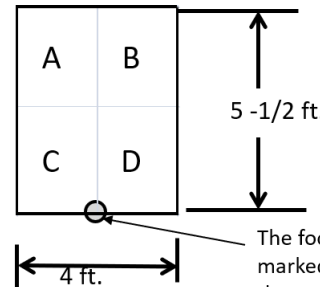


The foot of each grave site is marked with numbered pin corresponding to the cemetery map.

Section C1. Cremation Area.

Sub-site numbering scheme

Each cremation site can accommodate 4 cremation urns



Only flush markers are permitted in this Section

The foot of each cremation grave site is marked with numbered pin corresponding to the cemetery map.